

Company Profile



PT. SHUBA Mitra Solusi

Technology . Outsourcing . Consulting

www.shuba.co.id



Table of Contents

- 01** About SHUBA

- 02** Technology Services and Solutions

- 03** Technology Talent Competencies

- 04** Technology Partners

- 05** Project Experiences

- 06** Products

- 07** Customer Experiences

- 08** How To Reach Us



SHUBA Mitra Solusi, PT or "SHUBA" as it commonly known was established in 2003, is one of the Best Digital Solution Providers in Indonesia. With years of experiences in various industry mainly in Banking, Oil & Gas, Insurance, Manufacturing and many more..

SHUBA was designed to optimize business operations by increasing operational agility and boost the productivity of a business.



Managed Service and Professional Outsourcing



Technology Development



Technology Consulting and Advisory Services



People Development Training / Bootcamp



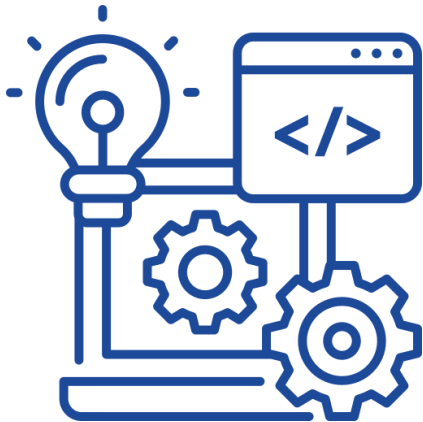
Integrated Anti – Counterfeiting Solution

Technology Services and Solutions

> Professional Managed Services and Outsourcing

Outsourcing concept is a perfect way to accomplish your special or seasonal projects without adding permanent staff to your workforce. **SHUBA digital outsourcing services enables you in getting qualified and experienced personnel to suit your requirements working exclusively for your enterprises.**

We have 2 types of digital workforce:



Software Engineer/Developer
(Front End, Back End, Mobile,
Full Stack)



Data Professional
(Data Engineer, Data Scientist,
Business Analyst)

Technology Services and Solutions

> Technology Development

SHUBA strives to provide you digital technology solutions that will help you to remain in step with your competition by continuously improving your information technology-based business solutions. For this, we use latest technology platforms, experienced team with proven portfolio and software development tools as well as employ latest project management techniques.



Software Development
(Web, Client/Server, Mobile
Based Apps, Micro Services
Development)



Big Data & Analytics
Implementation (Development
and Operationalizations)

Technology Services and Solutions

> Technology Consulting and Advisory Services

SHUBA offers a variety of high quality consulting services for solving project management, business analysis, system analysis, strategic planning, and other digital technology issues. Our skilled professional consultants deliver objective recommendations and tailored solutions to meet your business needs. Our team of consultants works together with the management in the client's organization to gather a complete picture of the working environment, product and services, corporate culture as well as to recognize and understand the various business processes and issues to be addressed. During capacity planning we assess the need for growth and allow for future improvement, ensuring a solution that will allow the organization to grow and cope with the additional load in the future.



Assessment



Benchmarking



Roadmap



Execution Plan

Technology Services and Solutions

> People Development - Training

Our training for enterprise is a well-rounded program that aims to build business and technology knowledge and capability both in a conceptual and practical way. Shuba enterprise training aims to build the whole technology and business capability needed by the great talent of an organization. Our training not only equips talent with solid fundamental concepts but also gives them real world experience of doing big data projects to harness their practical skill.



Type of Training

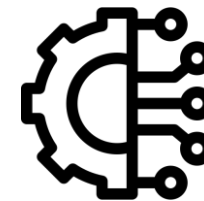
**Short
Training**



Bootcamp



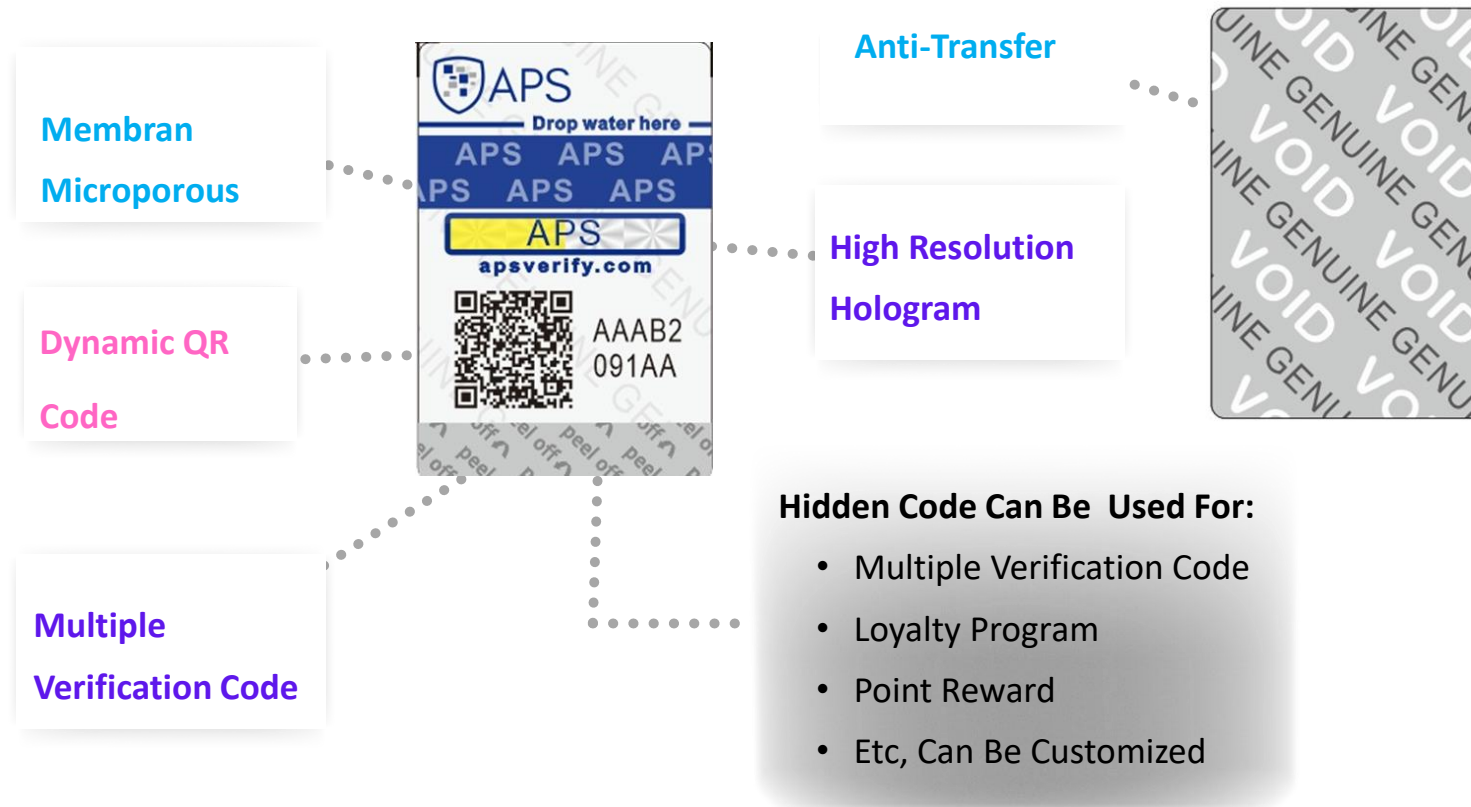
**Principal
Technology
Training**



Technology Services and Solutions

> Integrated Anti – Counterfeiting Solution

Is a Cloud Based Solutions Developed by SHUBA as an Integrated Anti-Counterfeiting Digital Platform.
We Protect Your Brand Physically & Digitally

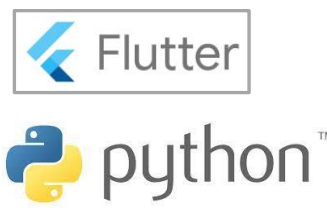


Technology Talent Competencies

We offer an independent and objective information technology solutions to fulfil client needs. Our approach and expert technology teams will help you to build an applications that not only meet your requirements but also built for scalability and maintainability.

Talent Competencies		
Data Scientist	Frontend Programmer/Developer	Digital Marketer
Data Engineer	Fullstack Programmer/Developer	Devops
Data Analyst	UI/UX Designer	Cyber Security
Business Intelligence	Project Manager	Visual/Graphic Designer
Backend Programmer/Developer	Technical Writer	

Technology Capabilities



Technology Partners

We partnering with well-known big name in their own domain to give our customer the best solution by using the latest technology available along with the best practice and proven methodology in application development.

The Samsung logo, consisting of the word "SAMSUNG" in a bold, blue, sans-serif font.The Alcatel-Lucent Enterprise logo, featuring the text "Alcatel·Lucent" in a bold, black, sans-serif font, with "Enterprise" in a smaller, black, sans-serif font below it.

Project Experiences

Sales Application Management

Sales Automation System

Billing System

SMS & Email Notification

Electronic Statement

Document Management System

Inventory Management & Logistic System

Quality Management & Information System

Supplier Portal

Raffle & Point Redemption System

Application Management Console

Employee Personal Data Online Form

Tanker Sailing Advice

Transportation Online System

Vendor Management System

E-Procurement

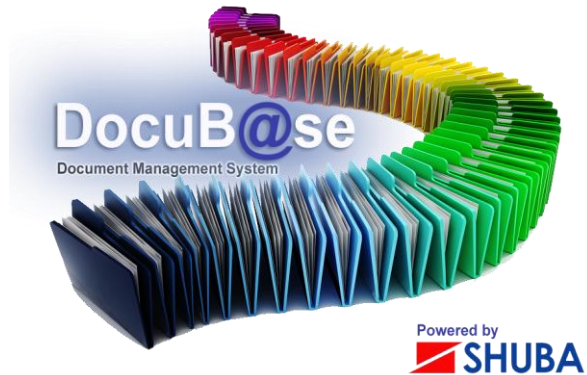
Inventory Management & Logistic System

Quality Management & Information System

And many more...

Products

Document Management System



Application Management Console



Integrated Anti – Counterfeiting Solution



Customer Experiences

Our customers are from reputable organizations of various sizes: multinationals, large national corporations, as well as state-owned enterprises and government institutions. With the wide range of companies that has benefited from our services as well as the broad array of industries they are involved in, attests to the quality and versatility of our services.

Inovasi Layanan E-Bizzpro Danamon Diganjar
Penghargaan Tingkat Regional

Posted on March 19, 2013 by Lila Intana



Berkat inovasi sistem layanan nasabahnya, Bank Danamon sukses mendapat penghargaan tingkat regional yakni Trailblazer Awards 2013 dalam kategori Process Excellence in Customer Centricity. Inovasi layanan yang dimaksud adalah E-Bizzpro.



How to reach us



PT. SHUBA Mitra Solusi

Gedung ASCOM
Jl. Matraman Raya No.67
Jakarta Timur - DKI Jakarta 13140
Indonesia

www.shuba.co.id

contact@shuba.co.id

Thank You

